

A vintage microphone on a stand is the central focus, set against a background of a wooden surface and a stack of newspapers. The entire scene is overlaid with a semi-transparent green filter. The microphone has a square, boxy body with a circular grille in the center, mounted on a dark, tapered stand. The newspapers are stacked in the foreground, with some pages visible, showing various headlines and images. The overall aesthetic is that of a classic, professional broadcast environment.

**TURNER**

Communicating  
for over  
45 years

**WIRING  
BOOKLET**

**TELEX**<sup>®</sup>



**ATTENTION**  
**Please**  
**read the**  
**following**  
**12 pages**  
**before wiring**  
**your**  
**microphone**

The information contained in this booklet is intended to be used as an aid in wiring Turner microphones to various transceivers. Telex Communications Inc. cannot assume responsibility for damage caused by wiring errors, nor can we accept responsibility for damage to equipment which is used in conjunction with our microphones.

If your transceiver is not listed in this instruction manual or you feel you cannot connect the microphone properly with the information provided in this booklet, you may receive assistance by mailing a copy of the circuit schematic for your radio to:

Turner Division of  
 Telex Communications, Inc.  
 ATTN: Customer Service  
 9600 Aldrich Ave. S.  
 Minneapolis, MN 55420  
 612-884-4051

\*On the front cover is a 1933 vintage Turner condenser microphone.

## ABBREVIATION EXPLANATION

The following abbreviations are used in this booklet, WR-77, listed in alphabetical order:

Bk ..... black wire  
 Bu ..... blue wire  
 Code (E) . electronic switching  
 Code (R) . relay switching  
 Code (S) . special switching, six-wire microphones  
 (See page 4 for additional switching information)  
 Gnd..... ground  
 K ..... denotes X1000, Ex: 33K ohms = 33000 ohms  
 N/C ..... no connection  
 R ..... red wire  
 Rg ..... ring, one of three conductors of a phone jack-type plug.  
 S ..... shield wire, also known as the ground wire.  
 Se ..... sleeve, one of three conductors of a phone jack-type plug.  
 Sh ..... shell  
 Sw.K..... switch kit, applies only to desk microphones, see page 9, 'Receiver signal reduced or replaced by squealing.'  
 Tp ..... tip, one of three conductors of a phone jack-type plug.  
 W ..... white wire  
 Y ..... yellow wire

The following information is a breakdown of the symbol designation used with Turner microphones:

C ..... ceramic interior — Ex: 450C  
 CS ..... custom special — Ex: **CS-1** (also referred to as special — Ex: **M+3special**, model numbers that have the last digit as "6", ie: RK56, RK66, or RK76 are also special microphones, see page 4 for further information.)  
 D ..... dynamic interior — Ex: 360D  
 H ..... high impedance — Ex: 566H  
 J ..... electronic switching — Ex: **JM+2/U** (a relay-switched microphone would be M+2/U)  
 L ..... low impedance — Ex: 360L or J450C-LO  
 M ..... medium impedance — Ex: NC350DM  
 NC ..... noise canceling — Ex: **NC450D**  
 + ..... amplified microphone — Ex: +350 or M+3  
 R ..... carbon interior — Ex: SR90R  
 RK ..... Road King series — Ex: **RK70J**

## Simplified Schematics

### EXPLANATION OF:

- Code (E)** — signifies that the radio is internally switched from receive to transmit by means of vacuum tubes or solid-state circuitry. Transceivers having electronic switching [Code (E)] require a Turner microphone that is internally wired for electronic switching. The following are some electronic-type microphones:
- mobile — JM+2/U, JM+3, RK50J, RK60J, RK70J, J+350, J450, etc.
  - desk — +2, +3, or Super Sidekick, etc.
- Code (R)** — signifies that the radio is internally switched from receive to transmit by an electro-magnetic device commonly called a relay. Transceivers having relay switching [Code (R)] require a Turner microphone that is internally wired for relay switching. The following are some relay-type microphones:
- mobile — M+2/U, M+3, RK50, RK60, RK70, +350, 450C, etc.
  - desk — +2, +3, or Super Sidekick, etc.
- Code (S)** — signifies that the radio is internally switched from receive to transmit by isolated switching, transferring B+ voltage from one circuit to the other. Therefore, this type transceiver requires one of the following:
- mobile — M+3special, M+3B, RK56, RK66, RK76, Expander 400, etc.
  - desk — CS-1, +3B, CS-3, Expander 500, etc.

### ATTENTION

#### Six (6) wire microphones used for Code (E) or Code (R) radio.

If you have purchased a six-wire microphone and your transceiver is either Code (E) or Code (R), refer to the following chart and examples for proper hook-up:

#### Code (E) Conversion

Code (E) wiring	6-wire microphone equivalent
White	white
Black	blue
Red	black
Shield	shield & red
	yellow wire not used

#### Example:

Midland 13-830 — Code (E)

From	To
1-white (W)	1-white (W)
2-shield (S)	2-shield & red (S&R)
3-red (R)	3-black (Bk)
4-black (Bk)	4-blue (Bu)
	yellow (Y) not used

#### Code (R) Conversion

Code (R) wiring	6-wire microphone equivalent
White	white
Black	blue
Red	red
Shield	shield
	black & yellow not used

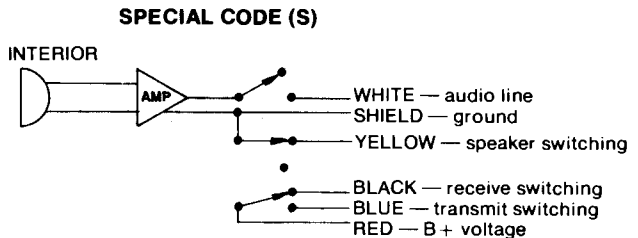
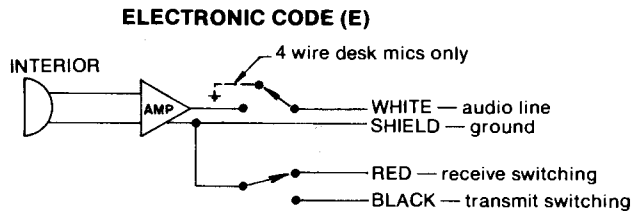
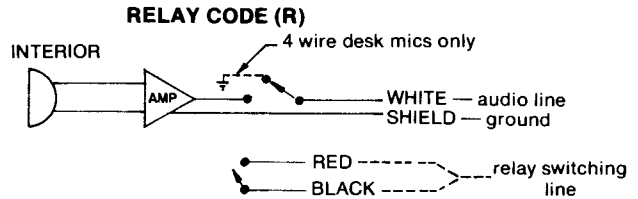
#### Example:

Cobra 28 — Code (R)

From	To
1-S	1-S
2-W	2-W
3-Bk	3-Bu
4-R	4-R
	Bk & Y not used

**Note:** When using six-wire microphones it would be best to connect the unused wires to the shield or ground wire.

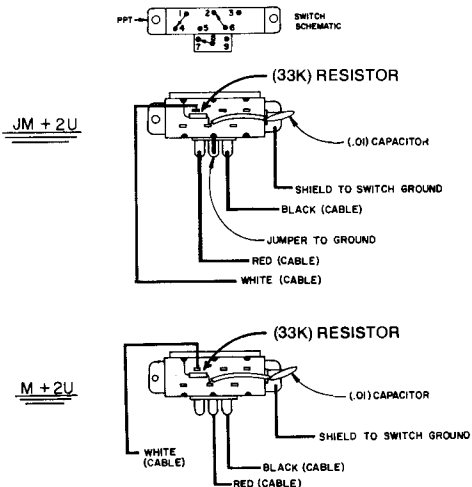
(ALL SWITCHES SHOWN IN "RECEIVE" POSITION)



## THE DIFFERENCE IN INTERNAL WIRING FOR RELAY AND ELECTRONIC SWITCHING M+2/U, JM+2/U MOBILE MICROPHONES

The sketches below reflect the difference in the internal wiring of the M+2/U (RELAY SWITCHING) and the JM+2/U (ELECTRONIC SWITCHING). To convert from one to the other follow these simple instructions:

1. Remove the 4 screws in the rear housing holding the microphone together.
2. With the microphone lying face down, remove the rear housing to expose the switch.
3. Rewire the switch as necessary as shown on the sketches, and reassemble the microphone.



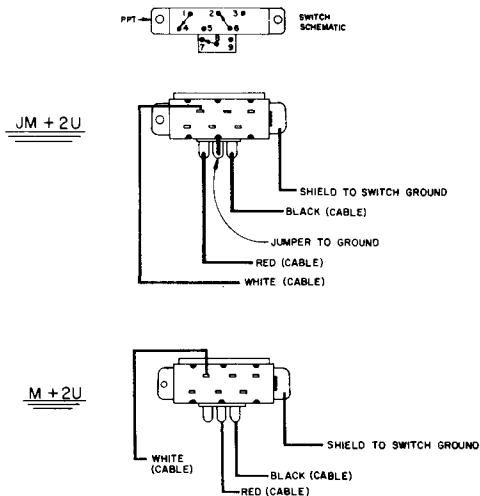
## THE DIFFERENCE IN INTERNAL WIRING FOR RELAY AND ELECTRONIC SWITCHING NEW MODEL M+2/U, JM+2/U MOBILE MICROPHONES

The following sketches are diagrams of the difference in internal wiring of the new models, M+2/U (RELAY SWITCHING) and JM+2/U (ELECTRONIC SWITCHING). The new models have fewer components than the old style, as can be noted by the deleted capacitor and resistor from the switch block. Due to the advanced engineering of the new M+2/U, the output level has been increased to provide for plenty of "talk" power. This microphone began its production in Conrac's West German plant, but before long, it will be manufactured in the states.

To convert from relay to electronic switching follow these simple instructions:

1. Remove the 4 screws in the rear housing holding the microphone together.

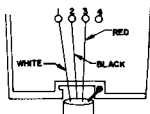
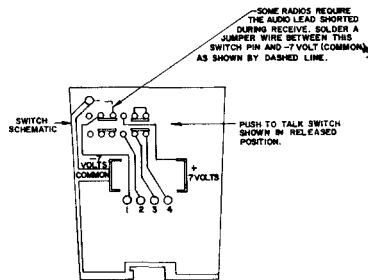
2. With the microphone lying face down, remove the rear housing to expose the switch.
3. Rewire the switch as necessary as shown on sketches, and reassemble the microphone.



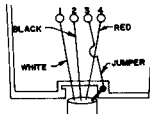
## THE DIFFERENCE IN INTERNAL WIRING FOR RELAY AND ELECTRONIC SWITCHING M+3, JM+3, RK60, RK60J, RK70, RK70J MOBILE MICROPHONES

The sketches below reflect the differences in the internal wiring of the M+3, RK60, RK70 (RELAY SWITCHING) and the JM+3, RK60J, RK70J (ELECTRONIC SWITCHING). To convert from one to the other follow these simple instructions.

1. Unscrew the hanger button and remove the rear door.
2. Remove the two screws under the door holding the microphone together.
3. With the microphone lying face down, hold down on the cable and remove the rear housing by lifting it off the microphone from the bottom first. This will expose the four terminals to which the cable is wired.
4. Rewire the cable to the four terminals as necessary and reassemble the microphone.
5. When installing the rear housing, hook the top of the rear housing under the teeth on the top of the front housing and fold together.



M + 3, RK60, RK70



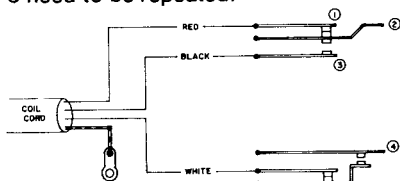
JM + 3, RK60J, RK70J

### IN CASE OF DIFFICULTY

**Squeal During Transmit** — normally caused by RF energy entering the transceiver from the microphone's white audio wire. Generally the best remedy for this problem is to insert a 47 to 50 micro henry (uh) rf choke in series with the white audio lead in the microphone. If RF chokes are not available, a resistor of values from 2.7K ohms to 10K ohms, ¼ watt, in series with the white audio lead should suffice. Although, when resistors are used the microphone output will be reduced.

**Squeal During First Portion Of Receive And Transmit In Desk Mics** — normally caused by switch misadjustment in desk microphones. To remedy this, adjust the key line so that it will switch to transmit at the same time the audio circuitry in the desk microphone is turned on.

- Step 1: Remove the four screws that hold the bottom plate onto the microphone. This will expose the switches in the microphone for adjustment.
- Step 2: Bend contact #3 so that it will be closer to contact #2 (see switch diagram below).
- Step 3: Replace bottom plate on microphone.
- Step 4: Test the microphone with the radio by pushing down slowly on the push-to-talk bar. If the radio speaker squeals, steps 1-3 need to be repeated.



**Excessive Battery Drain** — may be caused by switch misadjustment in desk microphones. Adjustment may be attained by bending contact #4 up slightly to open battery circuit. Also a defective amplifier assembly or pinched wires in both mobile and desk microphones can cause battery drain.

**Receiver Signal Reduced or Replaced By Squealing** — most often caused by the shorted-to-ground white lead in +2, +3 and Super Sidekick desk microphones. Disconnect the white lead from the plug with the receiver in the receive mode. If the receive signal returns to normal, you should order one of the following switch kits:

- | Part #   | Switch and installation instructions for |
|----------|--|
| B25475   | +2 microphone                            |
| B75255   | +3 microphone                            |
| B75255-1 | Super Sidekick microphone                |

Send \$4.00 for each kit required, enclosing check or money order for payment to:

Turner Division of Telex  
Attn: Small Part Sales  
8601 N.E. Highway 6  
Lincoln, Nebraska 68505

**Radio Immediately Transmits When Microphone Is Plugged In** — normally occurs in electronic switching radios and may usually be corrected by reversing the red and black leads, black and blue in 6-wire microphones.

### TROUBLESHOOTING

If you feel that a microphone may be defective, it is advisable to check the following points before taking further action:

1. Battery — check for proper voltage.
2. Battery connector — make sure battery is making solid contact with the connector.
3. Plug wiring — check wiring instructions and resolder all connections making certain that none of the exposed portions of the wires can come in contact with any of the other wires or the case of the connector.
4. If possible, wire your microphone to a different radio or wire another microphone to your radio to check for a defective microphone.
5. If available, check the output of the microphone by using an oscilloscope (preferable) or a high impedance voltmeter. Check for the presence of an AC signal between the white wire and shield while whistling into the keyed microphone with the volume control at maximum. You should read approximately 1 volt RMS.
6. Microphones that sound hollow or too bassy can

often be fixed by placing a .01 micro farad (uf) disc capacitor between the white audio wire and the shield, or in series with the white wire inside of the microphone.

7. Complaints of Fuzzy Speech may be attributed to overmodulation, a defective modulator stage or defective microphone. Fuzzy speech caused by overmodulation may be eliminated by reducing power microphone gain setting.
8. At times it may appear that this wiring booklet is in error on a given wiring diagram. Although the possibility of error exists, many times we have found that the transceiver manufacturer has changed his wiring to something other than shown on the schematic. If this is the case, the proper wiring can be figured out by solving the switching of the stock microphone and applying the resultant information to the Turner microphone. See page 5 for simplified switching schmetic of Turner mics.
9. If after trying the above you feel that the microphone is definitely defective, please return the mic to our Repair Department, enclosing the back cover of this booklet with the appropriate information.

#### THE USE OF VOX WITH THE TURNER SUPER SIDE-KICK, SIDEKICK 100, +2, and +3 —

Voice operated relay (VOX) is a means in which the radio circuitry takes audio input from the microphone and keys the transmitter key line. In order for a VOX circuit to work, the key line must not have a ground connected to it during its operation unless the VOX circuitry puts the ground on the key line. Most microphones used with VOX operation have the interior tied directly into the audio circuit of the radio and the key bar on the microphone does not need to be depressed for audio to be fed into the radio. However, on our models of base microphones with transistor amplifiers, the key bar must be depressed in order to give power to the amplifier in the microphone. In order to connect the Turner base-type transistorized microphones you should do the following: Contact the Turner white lead to the audio input of the plug. Connect the black Turner wire to the key line on the plug. Connect the shield to the shell or ground on the plug. **Leave the red wire completely disconnected.**

**VOX Operation** — For VOX operation put the switch at the bottom of the Turner microphone in relay position, and lock the touch bar on. The VOX circuitry will now work as normal. After using VOX be sure to unkey the microphone as battery drain will result if left on.

**For a Normal Push-to-Talk Operation** — Put the switch at the bottom of the microphone in electronic position and microphone will act normally for push-to-talk.

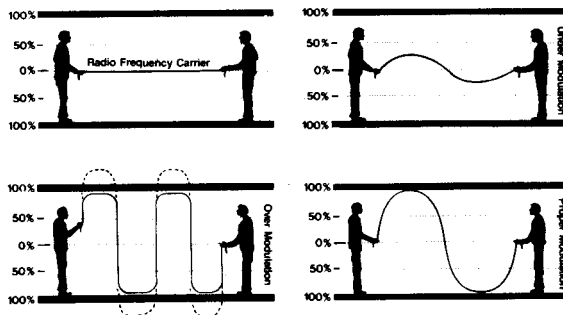
#### USE OF TURNER MICROPHONES

Turner Company manufactures two types of amplified microphones: the standard amplified microphone and a speech compressed microphone. In the use of a standard amplified microphone, the output will vary with distance between the mic and the sound source. However, the speech compressed mics maintain a relatively constant output with varying distances between the sound source and the mic. The CS-1, EX-400, EX-500, +3, +3B, M+3/special, M+3B, RK60/66 and RK70/76 are speech compressed models, while all other amplified microphones are of the standard type.

Amplified microphones cannot be used with any set requiring a carbon microphone without modification to the set. We do not recommend and do not assume any liability for such modification. Any attempt to use these microphones with a set of this type may result in damage to the microphone. We would recommend the Turner J+350 or +350 model microphone as they were designed primarily to work as transistorized replacement microphones in carbon microphone circuits.

#### SOME FACTS ABOUT AMPLIFIED MICROPHONES

If the microphone you have purchased is amplified, and you use it properly, you will noticeably improve your CB radio's clarity and EFFECTIVE range. The microphone will amplify the audio input to the radio, allowing you to use the microphone effectively from a comfortable distance as well as to create a higher AVERAGE modulation of the radio frequency (RF) carrier.



## WHAT IS MODULATION?

Think of the radio frequency carrier as a rope held between two people. When you MODULATE a radio frequency carrier with your voice, you're moving the carrier in much the same manner that you would if you raised your arm up and down and made waves in the rope.

Just as it is possible to wave our imaginary rope with less than full force, it is possible to have a strong frequency carrier and still not have an intelligent message. The microphone that comes with a radio may not modulate or "move" the carrier enough to allow the radio to operate efficiently.

It is important to fully modulate for effective communications, but over-modulation is ineffective. Imagine conducting our rope experiment in a room with the ceiling representing the 100% modulation limit required by the FCC. See what happens when you raise your arm up and down too vigorously. With an over-modulated radio frequency carrier, severe distortion and cross channel splatter occurs.

## ADJUSTING AN AMPLIFIED MICROPHONE FOR PROPER MODULATION

Begin transmitting with the microphone control near the low position. Ask other CB operators three to four miles away to check your signal strength and audio quality.

If you are told that your signal strength (S-meter reading) is good, but that audio intelligibility is weak, increase the microphone control slightly and ask for another audio check. Repeat the above procedure until told your transmission is breaking up or garbled. Reduce the microphone control setting slightly and repeat the audio check one more time. If audio quality is reported good on the last setting, the microphone has been properly set for optimum modulation and signal clarity. Later model CB radios may contain modulation — limiting circuitry which will not allow over modulation. Therefore, the transmission may not break up or sound garbled at the maximum gain setting.

### ACSA CORP.

CB 700S, CBRI 805  
Code (E)  
1-S  
2-W  
3-Bk  
4-R

### AIMOR

CB7000  
Code (R) 1-S  
W to B1 or 2-W  
R&S to Gnd 3-R  
Bk to C102, 4-Bk  
RL1

### AIRCATTLE

Code (E)  
1-R  
2-Bk  
3-W  
4-S

### ALARON

#### (B & B IMPORT)

B1025  
Code (R)  
1-W  
2-R  
3-Bk  
4-S  
B1050  
Code (E)  
1-Bk 1-S  
2-R 2-W  
3-W or 3-R  
4-S 4-Bk  
5-N/C

B1100  
Code (R)  
1-Bk  
2-R  
3-S  
4-W  
B1150  
Code (R)  
1-W 1-W  
2-S 2-S&R  
3-Bk or 3-Bk  
4-N/C 4-N/C  
5-R 5-N/C

B4600  
Code (E)  
1-S  
2-W  
3-Bk  
4-R

B4700  
Code (R)  
1-W  
2-S  
3-Bk  
4-R  
5-N/C

### ALLIED

A2567  
Code (R)  
1-W  
2-R  
3-Bk  
4-S

### ALPINE ELECTRONICS

BR640  
Code (E)  
1-W  
2-S  
3-Bk  
4-R  
5-  
(jumper pins 4&5)

### AMERICAN ELECTRONICS INC.

23 Plus  
Code (R)  
1-Bk  
2-W  
Sh-R&S  
76-501 Spirit, 76-601 Freedom  
Code (E)  
1-Bk  
2-R  
3-S  
4-W  
5-N/C  
6-N/C

### A R A

CB7100  
Code (E)  
1-S  
2-W  
3-Bk  
4-R

### ARTHUR FULLMER CO.

2300, 2301, 2355  
Code (E)  
1-W  
2-S  
3-R  
4-Bk

### ASAHI

ACT 1914  
Code (E)  
1-W  
2-S  
3-R  
4-Bk

### ATLAS

210X  
Code (R)  
Rg-W  
Tp-Bk  
Se-R&S

### AUDICOM 23

Model PT 23  
Code (R) 1-S  
W to B1 or 2-W  
R&S to Gnd 3-R  
Bk to Relay 1 4-Bk

### AUDIOVOX

MCB 500  
Code (S)  
1-W  
2-Y  
3-Bk  
4-R  
5-Bu  
6-S

MCB 1000  
Code (R)  
1-W  
2-S&R  
3-Bk  
4-N/C  
5-N/C

MCB 2000  
Code (S)  
1-W  
2-N/C  
3-Bk  
4-R  
5-Bu  
6-S  
Y not used

MCB 3000  
Code (R)  
1-W  
2-N/C  
3-R  
4-S  
5-Bk  
6-N/C

### AUTOMATIC RADIO

Plugs on all Automatic Radios must be fully assembled to be operational.

BCB1130  
Code (R)  
1-S  
2-W  
3-R  
4-Bk

CBU2068  
Code (E)  
1-W  
2-S  
3-R  
4-N/C  
5-Bk

CBE2151  
Code (E) Code (R)  
1-W 1-W  
2-Bk 2-Bk  
3-S or 3-R  
4-N/C 4-N/C  
5-R 5-S

CBR2175  
Code (E)  
1-W  
2-Bk  
3-S&R  
4-N/C  
5-N/C  
R may need to be on pin 5

CBH2265, CBL2270  
Code (E)  
1-S  
2-W  
3-Bk  
4-R

### BENJAMIN ELEC-TRONIC SOUND CO.

Concord 200  
Code (R)  
1-W  
2-S&R  
3-Bk  
4-N/C  
5-N/C

Concord 400  
Code (E)  
1-S  
2-W  
3-Bk  
4-R

### BLAUPUNKT

BCB5231  
Code (E)  
1-R  
2-W  
3-Bk  
4-S

### BOMAN-ASTROLINE

CB-515, CB-535, CB-555,  
CB-710, CB-740,  
CB-910, CB-930, CB-950  
Code (E)

1-W  
2-S  
3-R  
4-Bk

CB-750, CB-755  
Code (R)  
1-S  
2-W  
3-Bk  
4-R

CB-770  
Code (R)  
1-W  
2-S&R  
3-N/C  
4-Bk

CB-720, CB-720B

Code (E)  
1-W  
2-Bk  
3-R  
4-S

CBR-735  
Code (R)  
W to C129  
S&R to Gnd  
Bk to RL1

CBR-9700, CBR-9940  
Code (E)  
1-W  
2-Bk  
3-S  
4-N/C  
5-N/C

CBR-9900  
Code (E)  
1-W  
2-Bk  
3-S  
4-N/C  
5-R

CBR-9950  
Code (E)  
1-W  
2-S  
3-Bk  
4-R  
5-  
jumper pins 4&5

### BONSONIC

CB8  
Code (E)  
1-W  
2-S  
3-R  
4-Bk

### BROWNING

S-23 Series 2, 23S,  
68T, Raven, FMF S9,  
Golden Eagle Mark II,  
Mark III, Eagle  
Code (R)  
1-W  
2-Bk  
Sh-R&S

May require modification of mobile mics to short white lead during receive. See page 9. Insert a 270K ohm resistor in series with the white lead.

Eaglette, Eaglette II consult factory.

Eaglette and Eaglette II require Sw.K.

LTD, Brownie, SST, SST 2,  
Sabre, Baron  
Code (R)  
1-S  
2-W  
3-Bk  
4-R  
LTD, Sabre, SST 2 require  
jumper from pin 1 to 4

### CADRE (AMPHENOL)

500, 500C, 510B, 515, 525  
Code (R)  
1-Bk  
2-W  
3-S  
4-R  
5-N/C

510A  
Code (R)  
1-S 1-Bk  
2-Bk 2-W  
3-N/C or 3-S  
4-R 4-R  
5-W 5-N/C

777  
Code (R)  
1-R  
2-Bk  
3-W  
4-S

### CARDON

Spitfire Mark II, Ventura  
Code (R)  
1-W  
2-Bk  
3-S  
4-R

Spitfire, Satellite  
Code (R)  
1-S  
2-W  
3-Bk  
4-R

Phantom  
Code (R)  
1-W  
2-S&R  
3-N/C  
4-Bk

Tycoon CB 707  
Code (R)  
Wire color for color.

852 CB  
Code (R)  
1-W  
2-S  
3-R  
4-N/C  
5-Bk



**Constellation, Vanguard**

Code (R)  
Rg-Bk  
Tp-W  
Sh-S&R

**Command CB 727, Universe 747-**

Code (R)  
1-W  
2-Bk  
3-R  
4-S

**Apache, Astro**

Code (E)  
1-W  
2-S  
3-R  
4-Bk

**CHANNEL MASTER**

CB6830, CB6832

Code (E)  
1-R  
2-W  
3-Bk  
4-S

**CITI-FONE**

CD11/6, CD11/12, 99/6, 99/12

Code (R)

The above models have wired-in microphones. The TURNER microphones should be wired color for color.

SS, CD-5, CD-6, CD-7

Code (R)  
Rg-W  
Tp-Bk  
Sh-R&S

**CITIZEN**

Model M2, B524, M5

Code (E)  
1-W  
2-Bk  
3-S  
4-N/C  
5-R  
B524 requires Sw.K

**CLARICON**

Activator 30800, Privateer 30600

Code (E)  
1-S  
2-W  
3-R  
4-Bk  
Base 30850  
Code (E)  
1-S  
2-N/C  
3-Bk  
4-W  
5-R

**Pirate**

Code (R)  
1-N/C      1-N/C  
2-N/C      2-W  
3-R&S      or      3-N/C  
4-W      4-Bk  
5-Bk      5-R

14-523

Code (R)  
Wired color for color

30200

Code (E)  
W-audio "hot"  
S-Gnd  
R-grounded in receive  
Bk-grounded in transmit

**RAIDER**

Code (E)  
1-W  
2-S  
3-R  
4-Bk  
Requires Sw.K

**COBRA**

B & K-Cobra Cam 88, Cobra 98

Code (R)

1-W  
2-S  
3-Bk  
4-R  
Jumper 2&4

— May require modification of mobile mics to short white lead during receive, see page 8.

Cobra V

Code (E)

Tur      Original Mic  
         Color/Part  
W      pre-amp  
S      Gnd  
R      output  
         transformer  
         speaker winding  
Bk      Transmitter  
Sw.K required

Cobra 23, 27

Code (E)  
Wire as original except reverse R&Bk.  
Sw.K required

Cobra 24

Code (R)  
Tur      Original Mic  
         Color/Part  
W      PA/CB switch  
S&R      Gnd  
Bk      relay coil  
Sw.K required

Cobra 25, 28, 130, 131, 132,  
135, 880,  
85, 32 XLR, 138 XLR, 139 XLR

Code (R)  
1-S  
2-W  
3-Bk  
4-R  
85 requires Sw.K

Cobra 19, 21, 26, 139, 29, 89,  
29 XLR

Code (E)  
1-S  
2-W  
3-Bk  
4-R

Cobra 138

Code (R)  
Sh-S&R  
Rg-Bk  
Tp-W

Cobra 6

Code (E)  
Tur      Original Mic  
         Color/Part  
R      speaker output  
         transformer (T10)  
B      to the circuit  
         from diode (D8)  
W      to circuit from  
         R-31 (10K resistor)  
S      to Gnd

**COLT**

290  
Code (E)  
1-W  
2-S  
3-R  
4-Bk  
Requires Sw.K

**COMET**

SFT-900  
Code (E)  
This set uses a mic plug having 4 unnumbered pins. When viewed from the rear, the arrangement can be loosely described as a "Y". Consider the pins to be numbered: Upper left-2, Upper right-3, Center-4, Bottom-1.  
1-S  
2-Bk  
3-R  
4-W  
Sw.K required

**COMEX**

CCB770  
Code (E)  
1-W  
2-N/C  
3-N/C  
4-R  
5-Bk  
6-S

**COMMAND ELECTRONICS INC.**

Satellite Super  
Transmitter  
Code (E)  
1-S  
2-R  
3-Bk  
4-W  
The Star  
Code (R)  
1-S&R      1-S&R  
2-W      2-N/C  
3-Bk      or      3-Bk  
         4-W

**COMMANDER**

750  
Code (E)  
1-Bk  
2-S  
3-W  
4-R  
Must use external speaker

**COMMANDO**

CC2300, CC2310, CC4040,  
CC4086  
Code (E)  
1-W  
2-S  
3-R  
4-Bk  
2320, 2325  
Code (R)      1-S  
R&S to Gnd or      2-W  
Bk to RL1      3-R  
W to B1      4-Bk

2340, 2345

Code (S)  
W to R63, C54  
S&R to Gnd  
Bk to C19, R8, C12  
Y to Spkr Gnd  
Bu to R83, D12

CC4050

Code (E)  
1-R  
2-S  
3-N/C  
4-W  
5-Bk

CC4055

Code (S)  
1-Y  
2-R  
3-S  
4-W  
5-Bk  
6-Bu

**COMMUNICATIONS****POWER INC.**

CP300, CP400

Code (R)  
1-W  
2-S  
3-R  
4-Bk**COMPUTING DEVICES**

CDM-225

Code (E)  
1-S  
2-W  
3-Bk  
4-Gnd**CONTACT**

CB-23 CH

Code (R)  
1-W 1-Bk  
2-R&S 2-R&S  
3-N/C 3-N/C  
4-Bk or 4-W  
5-N/C 5-N/C  
6-N/C 6-N/C

Contact 6

Code (E)  
1-Bk  
2-N/C  
3-W  
4-S  
5-R**CORNELL-DUBILIER**

Mark X

Code (R)  
1-W  
2-Bk  
3-S&R  
4-N/C**COURIER**

Rebel 40, Conqueror 40D,

Caravelle 40D

Code (E)  
1-R  
2-W  
3-Bk  
4-S

R&amp;S may need to be reversed

Spartan PLL40, Conqueror, Conqueror II, Caravelle, Caravelle II, Centurion, Spartan, Gladiator

Code (R)  
Rg-Bk  
Tp-W  
Se-R&S

Cruiser

Code (E) Code (E) Code (R)  
1-R 1-S 1-R  
2-W 2-W 2-W  
3-Bk or 3-Bk or 3-Bk  
4-S 4-R 4-S

May require Sw.K

Classic II, Citation

Code (R)  
1-S&R 1-Bk  
2-W or 2-S&R  
3-Bk 3-W

Ranger-23, Traveller II

Code (E)  
1-R  
2-Bk  
3-W  
4-S

Classic

Code (R)  
1-Bk  
2-N/C  
3-W  
4-R&S

TR-3, TR-6, TR-12

Code (R)  
1-W  
2-S&Bk  
3-N/C  
4-R

TR-5, Tradesman, Traveller

(USA)  
Code (E)

The above units have a wired-in microphone. Wire color for color except reverse the red and black leads.

Royale

Code (R)  
1-R  
2-Bk  
3-W  
4-S

23 Plus, Fleet 30B, Courier 23

Code (R)  
1-N/C  
2-Bk  
3-W  
4-R&S

Courier 1M

Please contact factory

Redball, Classic III

Code (E)  
1-R  
2-W  
3-Bk  
4-S

Rebel +23

Code (E)  
Tur ..... Original Mic  
Color/PartR ..... purple  
Bk ..... R  
W ..... Y  
S ..... chassis ground  
or where  
original shield  
went

Requires Sw.K

Courier Chief

Code (E)  
1-S  
2-R  
3-Bk  
4-W

Courier Chief 23

Code (E)  
1-Bk  
2-R  
3-S  
4-W

Comet 23

Code (R)  
1-S  
2-R  
3-Bk  
4-W**CRAIG**

LT01

Code (R)  
1-N/C  
2-W  
3-S&R  
4-N/C  
5-Bk

L131

Code (R)  
1-N/C  
2-W  
3-S  
4-R  
5-Bk

4101, 4102, 4103, 4104, 4201

Code (E)  
1-N/C  
2-W  
3-S  
4-R  
5-Bk**DELCO**

CBD10, CBD20, CB20A

Code (E)  
1-W  
2-S  
3-R  
4-Bk**DELTA TRONIX**

D1325RF

Code (E)  
1-W  
2-S  
3-R  
4-Bk**DEMCO ELECTRONICS**

T110A, Traveller, Satellite

Code (R)  
1-S&R  
2-W  
3-Bk

Revelle

Code (R)  
Rg-W  
Tp-Bk  
Sh-R&S

Revelle 23

Code (E)  
W-mic audio  
R-grounded in receive  
Bk-grounded in transmit  
S-Gnd

Super Satellite, Star

Code (E)  
1-S  
2-R  
3-Bk  
4-W**DRAKE**

TR3, TR4, T4XB, T4XC

Code (R)  
Rg-W  
Tp-Bk  
Se-R&S**EBINA**

D1325RF

Code (E)  
1-W  
2-S  
3-R  
4-Bk**ECHO**

99'er

Code (R)  
W to Negative side of C129  
Bk to top of relay RY-1  
R&S to Gnd

Excellenz

Code (E)  
1-R  
2-Bk  
3-W  
4-S**E F JOHNSON**

CAUTION: Avoid contact between any metal microphone case and the radio case

Viking I, Viking II

Code (E)  
Wire color for color

Messenger I, Messenger III

Code (R)  
Wire color for colorMessenger III 242-143, 323 New  
Production  
Code (R)Tur ..... Original Mic  
Color/PartW ..... W  
Bk ..... Bu  
R ..... R  
S ..... Y, Bk, S

Messenger 100, 110, 123,  
123GRS  
Code (E)  
Wire color for color, except re-  
verse red and black.

Messenger 123A, 123B, 350,  
125, 120, 120A, 323A, 121, 122,  
123SJ, 191, 4120, 4140, 4145  
Code (S)  
Wire color for color

Messenger 124, M, 202, White  
Face, Messenger II  
Code (E)  
1-W  
2-R  
3-Bk  
4-S

Messenger 303, 600  
Code (R)  
1-W  
2-R  
3-Bk  
4-S

Messenger 300, 320, 323, M  
Code (R)  
Wire color for color

Messenger 250, 4170, 4175  
Code (S)  
1-W  
2-R  
3-Bk  
4-Y  
5-Bu  
Sh-S

352, 4740  
Code (R)  
1-W  
2-Bk  
3-N/C  
4-N/C  
5-R  
Sh-S

Viking Ranger  
Code (R)  
1-W  
2-N/C  
Sh-S  
Key Jack  
Tp-Bk  
Sh-R

223  
Code (E)  
1-W  
2-R  
3-Bk  
4-S  
5-N/C

351  
Code (R)  
1-S  
2-W  
3-Bk  
4-R

Messenger 130, 132  
Consult factory

### E I C O

753, 770, 771, 772, 777, 779,  
779A  
Code (R)  
1-Bk  
2-W  
Sh-R&S

7723  
Code (E)  
1-W  
2-S  
3-R  
4-Bk

7923  
Code (R)  
Tur ..... Original Mic  
Color/Part  
W ..... (5) on schematic  
(mic)  
R ..... RY side PTT on  
schematic  
Bk ..... T9 side PTT on  
schematic  
S ..... RY3 side of  
microphone

Note: Check the input im-  
pedance of your radio as some  
E I C O models have very high  
impedance and may not  
perform well with Turner mics.

### ELECTROPHONIC

CB700  
Code (E)  
1-W  
2-S  
3-R  
4-Bk

### ERIC

200  
Code (E)  
1-S  
2-W  
3-Bk  
4-R

### EVERSONIC

DK222  
Code (R)  
W to S4-1  
R&S to Gnd  
Bk to relay S4-2

1125  
Code (E)  
1-W  
2-S  
3-R  
4-Bk

1280  
Code (E)  
1-W  
2-S  
3-Bk  
4-R

ST22  
Code (E)  
1-W  
2-S  
3-R  
4-N/C  
5-Bk

HA23C  
Code (R) Code (R)  
1-W 1-W  
2-Bk&S 2-S&R  
3-R or 3-N/C  
4-N/C 4-N/C  
5-N/C 5-Bk

### E W T

ECB14  
Code (E)  
1-W  
2-S  
3-Bk  
4-N/C  
5-R

### FANNON

Fanfare 880DF, Caravelle 40D,  
Conqueror 40D, Fanfare Rangler  
40D, 125F, 182F, 184DF, 180,  
185DF  
Code (E)  
1-R  
2-W  
3-Bk  
4-S  
S&R may have to be reversed

Fanfare 100F  
Code (E)  
1-S  
2-W  
3-Bk  
4-R

Fanfare 120  
Code (E)  
Tur ..... Original Mic  
Color/Part  
R ..... Purple (lo side of  
T10)

Bk ..... R (C57 and  
R59+)  
W ..... Y (L15)  
S ..... chassis ground  
or where  
original shield  
went

M2300, XM2300  
Code (E)  
1-R  
2-Bk  
3-W  
4-S

May require modification of  
mobile mics to short white lead  
during receive. See page 8.

SFT400, SFT500  
Code (E)  
1-W  
2-S  
3-Bk  
4-N/C  
5-R

Insert a 4.7K ohm resistor in  
series with the microphone  
white lead of desk mics.

SFT600  
Code (R)  
1-R&S  
2-W  
3-Bk

SFT800A  
Code (E)  
S-circuit ground  
W-audio amp  
R-output transformer speaker  
winding  
Bk-2-volt source

IC3000, IC5000  
Code (R)  
Tp-W  
Sh-S  
R&Bk not used

Fanfare 700  
Code (R)  
1-W  
2-R&S  
3-Bk  
4-N/C  
5-N/C  
Requires Sw.K

Insert a 4.7K ohm resistor in  
series with the microphone  
white lead of desk micro-  
phones.

SFT900  
Code (E)  
1-S  
2-W  
3-R  
4-Bk  
Requires Sw.K

Fanfare 100  
Turner ..... Pin # Original  
mic color/part  
R ..... 1 ..... Purple  
Bk ..... 3 ..... R  
W ..... 2 ..... Y  
S ..... 4 ..... chassis  
ground or where  
original  
microphone  
shield went

Fanfare 880, 350F  
Code (R)  
Rg-Bk  
Tp-W  
Sh-R&S

Fanfare 330  
Code (R)  
1-W  
2-S  
3-Bk  
4-R

### FIELDMASTER

FK CB002S  
Code (E)  
1-R  
2-Bk  
3-W  
4-S  
5-N/C

FK CB001A, FK CB005  
Code (E)  
1-R  
2-Bk  
3-W  
4-S

CB6832  
Code (E)  
1-R  
2-W  
3-Bk  
4-S

Micro Mini 6, 3, 23  
Code (S)  
1-W  
2-Y  
3-Bk  
4-R  
5-Bu  
6-S

TR-16  
Code (S)  
Consult Factory

TR-18M  
Code (R)  
1-W  
2-R&S  
3-Bk

TR-20  
Code (R)  
Rg-W  
Tp-Bk  
Sh-R&S

TR-17  
Code (R)  
1-W  
2-S  
3-Bk  
4-N/C  
5-R

### FOX

MR21  
Code (R)  
1-W  
2-R&S  
3-N/C  
4-Bk

### FULLCOM

2301  
Code (E)  
1-W  
2-S  
3-R  
4-Bk

### GALAXY

GT550  
Code (R)  
Rg-W  
Tp-Bk  
Se-R&S

### GEMTRONICS

GTX 3000  
Code (E)  
1-W  
2-Bk  
3-S  
4-N/C  
5-R

CTX230  
Code (E)  
1-W  
2-S  
3-Bk  
4-R  
Requires Sw.K

GTX 5000  
Code (R)  
1-W  
2-Bk  
3-S&R  
4-N/C

GTX-23, GTX-36, GTX-3323  
Code (E)  
1-W  
2-S  
3-R  
4-Bk

GTX-2300  
Code (R)  
1-W  
2-Bk  
3-R&S  
4-N/C

GTX-2325  
Code (R)  
1-W  
2-Bk  
3-S  
4-R

### GENERAL ELECTRIC CO.

Plugs on all GE Radios must be fully assembled to be operational.

3-5800, 5801, 5801A, 5809,  
5810, 5810A, 5810B, 5811,  
5811A, 5811B, 5818, 5871

Code (E)  
1-S  
2-N/C  
3-Bk  
4-W  
5-R  
Requires Sw.K

3-5801B, 5802, 5812A, 5819,  
5819A, 5821, 5821A, 5825A,

5869  
Code (E)  
1-W  
2-S  
3-R  
4-Bk  
Requires Sw.K

4E77D1, 4E77D2, 4E77D3

Code (R)  
1-R&S  
2-W  
3-Bk  
4-N/C  
May require Sw.K

### GENERAL MOTORS

GM23B, GM23M, GMCBD10A  
Code (E)  
1-W  
2-S  
3-R  
4-Bk  
GM23B requires Sw.K

GM4120  
Code (S)  
J10-W  
J11-Y  
J12-S  
J13-Bu  
J14-R  
J15-Bk

### GENERAL RADIOTELEPHONE

VS-4  
Not compatible with amplified  
mics.

MC-5  
Code (R)  
Rg-W  
Tp-R  
Sh-Bk&S

MC-7, MC-8, MC-6

Code (E)  
1-R  
2-Bk  
3-S  
4-W  
Disconnect 1.5K resistor (R44)  
inside radio on MC-7 and MC-8.

MC-9

Code (R)  
1-N/C  
2-Bk  
3-R&S  
4-W

MC11-A

Code (R)  
1-W  
2-Bk  
3-R&S  
4-N/C

SB-72

Code (R)  
1-W  
2-R&S  
3-Bk  
4-N/C

If hum exists, disconnect R-1  
(18K ohms) inside unit.

### GLOBE ELECTRONICS

9000, 9001  
Code (R)  
1-W  
2-R  
3-Bk  
4-S

CB 100, 100A

Code (R)  
Tur ..... Original Mic  
Color/Part  
W ..... signal lead  
R&S ..... Grounded  
Bk ..... becomes  
grounded in  
transmit position

CB200

Code (R)  
1-W  
2-Bk  
Sh-R&S

President VIII

Code (R)  
Rg-W  
Tp-Bk  
Sh-R&S

### GONSET

Communicator 4  
Code (R)  
Rg-W  
Tp-Bk  
Se-R&S

**GRANADA**

CB4  
Code (E)  
1-W 1-W  
2-S 2-S  
3-Bk or 3-R  
4-N/C 4-Bk  
5-R

CB6  
Code (E) (E) (R)  
1-S 1-S 1-S&R  
2-N/C 2-W 2-W  
3-W or 3-R or 3-N/C  
4-R 4-Bk 4-Bk  
5-N/C  
6-Bk

CB7  
Code (E) (E) (R)  
1-S 1-R&S 1-S&R  
2-W or 2-W or 2-W  
3-R 3-N/C 3-N/C  
4-Bk 4-Bk 4-Bk

CB27  
Code (E)  
1-R&S  
2-W  
3-N/C  
4-Bk

Prominent, 1125  
Code (E)  
1-W  
2-S  
3-R  
4-Bk

BCB1130  
Code (R) Code (R)  
W to B1 1-S  
R&S to Gnd or 2-W  
Bk to RL1 3-R  
(relay) 4-Bk

FCB770  
Code (S)  
1-W  
2-N/C  
3-Bu  
4-S  
5-Bk  
6-R

**GREAT**

GT418  
Code (E)  
1-S 1-R  
2-W or 2-Bk  
3-R 3-W  
4-Bk 4-S  
5-N/C

**HALLICRAFTERS**

CB20  
Code (S)  
W to W  
S to S

Bk to Bu  
R to Bk  
Bu to R  
Y-not used

HCM275  
Code (S)

1-W  
2-S  
3-Bk  
4-R  
5-Bu  
Y-not used

CB-12, CB-14

Code (R)  
Wire color for color. Insert a 4.7K ohm resistor in series with the white lead of desk mics.

CB-3, CB-3A

Code (R)  
1-W  
2-Bk  
Sh-R&S

CB-5, CB-5A, CB-5 Mark II,

CB-10  
Code (R)  
Wire color for color

CB-21

Code (R)  
Tur ..... HAL  
W ..... R  
S ..... S  
Bk ..... W  
R ..... Bk

CB-7, CB-9, CB-17, CB-19

Code (E)  
Same as original microphone, if original mic number is 085-000234.

May require modification of mobile mics to short white lead during receive. See page 8.

CB-17, CB-19

Code (E)  
Same as original mic except reverse R and Bk leads if original mic number is 085-000276.

May require modification of mobile mics short white lead during receive. See page 8.

CB-24

Code (R)  
Tur ..... Original Mic  
Color/Part  
R&S ..... common Gnd  
W ..... mic amp Q-9  
Bk ..... relay coil

CB-1

Code (R)  
Pin-W  
Sh-S  
R&Bk-N/C

FPM300  
Code (R)  
Rg-W  
Tp-Bk  
Sh-R&S

**HAMMERLUND**

CB23  
Code (R)  
W to R  
B to W  
R&S to B&S

**HANDIC**

230  
Code (S)  
1-Y  
2-R  
3-S  
4-W  
5-Bk  
6-Bu

235

Code (S)  
W to orange  
S to S  
Bk to Bk  
Bu to Violet  
R to W  
Y to R  
Consult factory in case of difficulties

240

Code (S)  
1-W  
2-Bu  
3-S  
4-Y  
5-Bk  
6-R

2305

Code (R)  
1-S 1-N/C  
2-W or 2-W  
3-R 3-Bk  
4-Bk 4-R&S or

Code (E)

1-W  
2-R  
3-N/C  
4-N/C  
5-Bk  
6-S

**HEATH CO.**

GW14, GW10, MW34

Code (R)  
Tur ..... Original Mic  
Color/Part  
W ..... mic audio  
Bk&R ..... relay control  
S ..... Gnd

GW42

Code (R)  
1-S  
2-W

3-R  
4-Bk  
GW12, GW22, GW11A, GW11D,  
GW32

Code (E)  
Tur ..... Original Mic  
Color/Part  
W ..... mic audio  
Bk ..... grounded in  
transmit  
R ..... grounded in re-  
ceive  
S ..... Gnd

HW18-1, 18-2

Code (E)  
Wire color for color

SB-101, SB-102

Code (R)  
1-W  
2-Bk  
Sh-R&S

**HITACHI**

CM4850H  
Code (E)  
1-S  
2-W  
3-Bk  
4-R

CM2410A

Code (E)  
1-S  
2-N/C  
3-W  
4-Bk  
5-R

CM2430H, CM4800H, CM6700H

Code (E)  
1-S  
2-N/C  
3-Bk  
4-W  
5-R  
Require Sw.K

**HY-GAIN**

623, 623A, 623PR

Code (R)  
Rg-W  
Tp-Bk  
Se-R&S

23+

Code (R)  
1-W  
2-Bk  
3-R  
4-S

670, 670A, 671, 671A

Code (S)  
1-W  
2-Bu  
3-R  
4-S  
5-Bk  
Y-not used

672, 672A, 673, 673A, 674,  
674A

Code (R)

1-W  
2-R&S  
3-Bk  
4-N/C

1A, 670B, 671B, 672B, 673B,  
674B, 681, 682, 682A, 683,  
2680, 2681, 2682, 2683, 2683A,  
2701, 2702, 2703, 2705, 3077,  
3078, 3084, 3087, 3107

Code (E)

1-W  
2-Bk  
3-S  
4-N/C  
5-R  
Sw.K required

CB6830, CB6832

Code (E)

1-R  
2-W  
3-Bk  
4-S

### INTERNATIONAL CRYSTAL MFG.

50A-1, 50AN, 59, 100A, 440,  
460, CTZ-880

Code (R)

1-W  
2-S  
3-Bk  
4-R  
Jumper 2&4

MO-23

Code (R)

1-Bk  
2-R&S  
3-W  
4-N/C

CTZ-50

Code (R)

1-W  
2-S  
3-N/C  
4-Bk  
5-jumper to pin 2

### I T T

CB2300M

Code (S)

1-W  
2-Y  
3-Bk  
4-R  
5-Bu  
6-S

CB4000M

Code (E)

1-S  
2-W  
3-Bk  
4-R

### JANA

KJ-CB-32-MK4

Code (R)

Rg-W  
Tp-R  
Se-S&Bk  
R&Bk may need to be reversed

KJSSB-100

Code (R)

1-Bk  
2-R&S  
3-W  
4-N/C  
5-N/C

BK & W may need to be re-  
versed.

### J C PENNEY CO.

985-6060 Pinto 23B, 981-6051

Golden Pinto

Code (R)

1-R&S  
2-W  
3-Bk

981-6051, 981-6220

Code (E)

1-S&R  
2-W  
3-Bk  
4-N/C

See note on 6212A

981-6220, 981-6235, 981-6213,

981-6210A, 981-6230,

981-6212, 981-6212A,

981-0607, 981-6236, 981-6237,

981-6214, 981-6218, 981-6237A

Code (E)

1-S  
2-W  
3-Bk  
4-R

981-6075 Pinto SSB

Code (E)

1-R  
2-W  
3-Bk  
4-S

981-6200

Code (E)

Turner..... Original Mic  
Color/Part

W ..... W  
S ..... S  
R ..... R  
Bk ..... Green

Insert a 4.7K ohm resistor in  
series with white lead of desk  
mics.

985-6050 Pinto 23

Code (R)

1-S&R  
2-Bk  
3-W

Insert a 4.7K ohm resistor in  
series with the white lead of  
desk mics.

985-6050 Pinto Jr.

Code (R)

1-Bk  
2-W  
3-R&S

981-6240, 981-6240A, 981-6241

Code (R)

1-S  
2-W  
3-Bk  
4-R

981-6211A

Code (R)

1-W  
2-R&S  
3-Bk  
4-N/C

1-R&S  
or 2-W  
3-N/C  
4-Bk

981-6201

Code (R)

1-W  
2-S&R  
3-Bk  
4-N/C  
If wired in, color for color, or  
Code (E)  
P14-S  
P15-W  
P16-R  
P17-Bk

981-6217

Code (E)

1-W  
2-S  
3-Bk  
4-R

981-6217B

Code (E)

1-W  
2-S  
3-Bk  
4-R  
5-N/C  
6-N/C

6203

Code (E)

1-S  
2-W  
3-Bk  
4-R  
5-N/C

6210

Code (E)

1-W  
2-S  
3-R  
4-Bk

6212A

Code (E)

1-S&R  
2-W  
3-Bk  
4-N/C

Some model 6051 and 6220  
radios may wire like the above

### JET SOUNDS

CB7000

Code (R)

1-W  
2-R  
3-Bk  
4-S

CB7150

Code (E)

1-W  
2-Bk  
3-R  
4-S

### J I L CORP. OF AMERICA

Combo 23, JN852CB, JN606CB

Code (R)

1-W  
2-S  
3-R  
4-N/C  
5-Bk

M3, M5, B524

Code (E)

1-W  
2-Bk  
3-S  
4-N/C  
5-R

### KALIMAR INTERNATIONAL CORP.

K740

Code (E)

1-S  
2-W  
3-Bk  
4-R

K747

Code (R)

1-S  
W to B1 or 2-W  
Bk to relay 3-R  
S&R to Gnd 4-Bk

### KENWOOD

TS520, TS900

Code (R)

1-W  
2-R  
3-Bk  
4-S

### KNIGHT (Allied Radio)

KM2590

Code (E)

W to W  
R to Bk speaker transformer  
S to Bk Gnd  
Bk to R

**KOLTEK**

Code (R)  
1-S  
2-W  
3-R  
4-Bk

**KRACO ENTERPRISES INC.**

KCB2310, 2320, 2320A, 2330, 2330A, 2330B, 2340, 2345, 2355, 4010, 4020, 4030, 4040, 4045, 4088

Code (E)  
1-W  
2-S  
3-R  
4-Bk  
Sw.K required

1307  
Code (S)

1-W  
2-Y  
3-Bk  
4-R  
5-Bu  
6-S

1401  
Code (R)

1-S  
2-W  
3-R  
4-Bk

1300  
Code (E)  
W to L15  
S to Gnd  
Bk to C57  
R to T10

2370  
Code (R)

1-B  
2-N/C  
3-R&S  
4-N/C  
5-W  
6-N/C

2390  
Code (R)

1-W  
2-S&R  
3-Bk  
4-N/C  
5-N/C

4003, 4004  
Code (E)

1-W  
2-S  
3-R  
4-Bk  
5-N/C

4075  
Code (E)  
Tur to Kra  
W to Y  
R to Yellow/green  
S to S  
Bk to orange

**KRIS**

23+  
Code (R)  
1-W  
2-Bk  
3-S  
4-R  
Insert .01 mfd. capacitor in series with the white lead for desk mics.

T-23, 99'er — Wired-in mic

Code (R)  
Turner to Kris  
W-negative side of C129  
Bk-top of relay Ry-1  
R&S-Gnd

Vega  
Code (R)  
Turner ..... Original Mic  
Color/Part  
S ..... S  
W ..... green or Y  
R ..... R  
Bk ..... Bu or purple

XL-23, XL-23A

Code (R)  
1-W  
2-S&R  
3-Bk  
4-N/C  
See Victor 1 for alternate wiring.

XL-70  
Code (R)

1-W  
2-Bk  
3-S  
4-R  
Pins 3 and 4 may be reversed

Victor I, Victor II, Valiant, Ventura, XL25, XL30, XL40, XL45, XL50

Code (E)  
1-W  
2-S  
3-Bk  
4-R  
22K ohm resistor may be needed in series with white lead for desk mics.

**KRYPTON-BETA**

ACT1914, ACT2000

Code (E)  
1-W  
2-S  
3-R  
4-Bk

**KYODO-SAWTRON**

Sawtron 770, 790  
Code (R)  
1-S  
2-W  
3-Bk  
4-R

**LAFAYETTE**

Telsat 1023, Micro 66  
Code (R)  
1-W  
2-R  
3-Bk  
4-S  
5-N/C  
S&R reversed on some 1023 models  
Telsat SSB75, Micro 223, HB640, HB650, HB740, HB750, HB940, HB950, Telsat 1050, Telsat 1140, SSB100  
Code (E)  
1-W  
2-Bk  
3-S  
4-N/C  
5-R  
If the above does not work, use the following:

Publicom 1, SSB80, SSB100, SSB120, SSB140, HB95, HB540, HB550, HB640, Telsat 1000, Micro 723, 923, Questor Mark I

Code (S)  
1-W  
2-Bu  
3-R  
4-S  
5-Bk  
Y-not used

Comstat 35  
Code (R)  
1-W  
2-R  
3-Bk  
4-S

Com-phone Mark II  
Code (R)

1-W  
2-R  
3-S  
4-Bk  
5-N/C

HB-700

Code (S)  
Tur ..... Original Mic  
Color/part  
Y&S ..... S or Bk  
W ..... R  
R ..... W  
Bk ..... green or Bk  
Bu ..... Bu

HB-400  
Code (E)  
1-W  
2-Bk  
3-R  
4-S  
or, wire color for color

HA-450, HA-750, HB-555, HB-23A, HB-425, HB-500A, HB-501, HB-502, HB-525A, B, C, D, E, F, HB-600A, HB-625A, HE-20D, HE-20T, Telesat: 23, 50, SSB-25, 150, 920, 924, SSB-50, Micro 12, 23, 925, SSB-50A, 925

Note: These sets use a mic plug having 4 un-numbered pins. When viewed from the rear the arrangement can be loosely described as a "Y". Consider the pins to be numbered: upper left - 2, upper right - 3, center - 4, bottom - 1

Code (R)  
1-Bk  
2-R  
3-S  
4-W  
Occasionally a jumper is required between Pins 2 and 3.

HB-444, Comstat 19, Comstat 23, Mark V, Mark VI, Comstat 35  
Code (E)

1-W  
2-Bk  
3-R  
4-S  
Occasionally a jumper is required between Pins 3 and 4.

Comstat 25A, B  
Code (R)  
1-W  
2-Bk  
3-R  
4-S  
25A may be Code (E)

HA-460  
Code (R)  
1-W  
2-Bk  
3-N/C  
4-R&S

May require modification of mobile mics to short white lead during receive. See page 8.

HB-111, HB-200, HB-222, HE20, HE20A, WX, AWX, B, C, HE-43C  
Code (R)  
1-Bk  
2-R  
3-W  
4-S  
5-N/C





13-150  
Code (E)  
Tur ..... Original Mic  
Color/Part  
W ..... audio amp thru  
relay contacts  
Bk ..... relay coil  
R ..... 12.6 volt bus  
S ..... chassis Gnd

13-160 & 13-855  
Code (E)  
Color for color except reverse  
R&Bk leads.

13-860  
Code (R)  
1-W  
2-R&S  
3-Bk

13-894, 13-896  
Code (S)  
1-W  
2-S  
3-Bu  
4-R  
5-Bk  
Y-not used

13-882  
Code (S)  
1-W  
2-Bu  
3-R  
4-S  
5-Bk  
Y-not used

**MIDSTATE**  
Cub II MT7500  
Code (E)  
1-S  
2-W  
3-Bk  
4-R

**MONTGOMERY WARD**  
Gen 702A, Airline 774  
Code (R)  
1-W  
2-S&R  
3-N/C  
4-Bk

**MOTOROLA INC.**  
CB1124, 1125  
Code (E)  
1-Bk  
2-R  
3-S  
4-W  
Mocat 2020, 4020  
Code (E)  
1-Green  
2-W  
3-Bk  
4-R  
Use J + 350,

**NUVOX**

5010  
Code (R)  
1-W 1-W 1-W  
2-S or 2-R&S or 2-R  
3-Bk 3-Bk 3-S  
4-R 4-Bk

TC5020  
Code (S)  
1-W  
2-Y  
3-Bk  
4-R  
5-Bu  
6-S  
7000  
Code (R)  
1-W  
2-R  
3-S  
4-Bk  
Pins 3 & 4 are tied together in-  
side the radio

**OLSON**

409  
Code (R)  
1-W  
2-S&R  
3-Bk  
4-N/C  
5-N/C

**PACE**

8010, 8015  
Code (R)  
1-Bk  
2-N/C  
3-S&R  
4-W  
8010A, 8015A, 8015B  
Code (E)  
1-Bk  
2-S&R  
3-N/C  
4-W  
Bl-3100, 113, 144, 145, 161,  
162, 166, 1000B, 1000M, 8041,  
8046  
Code (R)  
1-W  
2-S&R  
3-N/C  
4-Bk  
All require Sw.K except the 166  
CB76, 2300C, 2300CA, DX2300B  
Code (E)  
1-Bk  
2-R  
3-S  
4-W  
Sw.K required  
Desk mics on the DX2300B are  
not recommended.

Bl-35  
Code (R)  
1-R  
2-Bk  
3-S  
4-W

Bl2000-35  
Code (R)  
W-connect to RFC5 and R36  
junction  
S-audio and transmit Gnd  
R - Ryl  
Bk - Rx Gnd  
I, II, II-S, 100, 200, +23, 2300  
Early Model  
Code (E)

Tur ..... Original Mic  
Color/Part  
W ..... volume control  
and/or via  
PA/CB switch  
Bk ..... relay coil and/or  
via PA/CB  
switch

R ..... receiver Gnd  
S ..... transmitter Gnd  
Sw.K required

5000  
Code (R)  
6-R  
7-S  
8-W  
9-Bk

TA2300, TA2300B  
Code (E)  
1-W  
2-S  
3-R  
4-Bk

2376  
Code (E)  
Tur ..... Original Mic  
Color/Part  
W ..... audio amp  
S ..... chassis Gnd  
R ..... circuit Gnd  
Bk ..... relay coil  
Sw.K required

Auto Mate  
Special switching — consult  
factory

Side Talk  
Code (R)  
1-W  
2-S  
3-R  
4-Bk

10-2  
Code (R)  
R&S-Gnd  
W-connect to R44  
Bk-connect to Gnd contact point  
on relay

100-S, 123A, 123, 133, 100-  
ASA, 143  
Code (R)  
1-Bk  
2-R&S  
4-W  
3, 5, & 6-N/C  
100S, 123A, 133, 143 require  
Sw.K

143, B1-120  
Code (R)  
1-Bk  
2-S&R  
3-N/C  
4-W  
2376A, B, 223-Wired-in  
Microphone  
Code (R)  
Tur ..... Original Mic  
Color/Part

W ..... W  
Bk ..... R  
R ..... Bk  
S ..... S  
223 requires Sw.K  
Some models 2376A require  
Code (E) switching

1023, Side Talk 1023B  
Code (R)  
W-Tp  
Bk-Rg  
R&S-Sh

2300  
Code (E)  
(Five Pin)  
1-N/C  
2-Bk  
3-R  
4-S  
5-W

(Four Pin)  
1-Bk  
2-R  
3-S  
4-W  
Some model Pace 4-pin con-  
nections, the R&Bk wires must  
be reversed.

Pace 130  
Code (R)  
1-W  
2-S&R  
3-N/C  
4-Bk  
In some cases reverse Bk&W.

**PAL ELECTRONICS**

Roadrunner Series, Coyote

Code (R)

1-W

2-Bk

3-R

4-S

In some cases 3 and 4 need to be jumped

**PALOMAR**

Digicom 100

Code (R)

1-W

2-Bk&amp;S

3-R

In some cases pins 2 and 3 need to be reversed.

Skipper 71, 71B, 73

Code (R)

Bk-Tp

W-Rg

R&amp;S-Sh

21, 41, 49, 4100

Code (E)

1-S

2-W

3-Bk

4-R

21, 41, 49, 4100

**PANASONIC**

2300, RJ3200

Code (E)

1-R

2-W

3-Bk

4-S

Sw.K required

See "Squeal during transmit" if need be

RJ3050, 3100, 3150, 3250

Code (E)

1-W

2-S

3-Bk

4-R

5-N/C

CR-B1717EU, 4700, 4701, 4737, 4747, 4748

Code (E)

1-W

2-Bk

3-S

4-N/C

5-R

**PEARCE SIMPSON**

Simba, Cheetah, Bengal

Code (R)

1-Bk

2-W

3-R&amp;S

10K ohm 1/4 watt resistor required in series with white lead when using desk mics.

Following are older models of Simba, Cheetah and Bengal

Bearcat 23, Bearcat 23B, Tiger 23, Cougar, Simba SSB, Cheetah SSB, Panther SSB, Bengal SSB, Cougar 23, Simba, Cheetah, Director 23

Code (R)

1-W

2-R&amp;S

3-Bk

Insert 10K ohm resistor in series with white lead for desk mics.

Tiger 23B, Tiger 23C, Cougar 23B, Bobcat 23C, Bearcat 23C, Super Lynx, Tiger 40A, Bobcat 23E, Tiger Mark IV, Puma 23C, Lynx, Puma, Tiger Mark II

Code (E)

1-W

2-S

3-R

4-Bk

For Bearcat 23C insert 10K ohm resistor in series with white lead for desk mics.

Lynx, Puma, Tiger 40A require Sw.K

Tomcat 23, Tomcat

Code (E)

Tur ..... Original Mic  
Color/Part

S ..... S

R ..... violet

W ..... Y

Bk ..... R

Sentry

Code (R)

Tur ..... Original Mic  
Color/Part

R&amp;S ..... Gnd

Bk ..... relay coil

W ..... through C22 to Q4

Insert 4.7K ohm resistor in series with the white lead of desk mics.

Guardian 23, Guardian 23B, Escort

Code (R)

1-W

2-Bk

Sh-R&amp;S

Director, Escort II

Code (R)

1-W

2-N/C

3-S&amp;R

4-N/C

5-Bk

Install 100K ohm 1/4 watt resistor in series with white lead on desk mics.

2301

Code (E) Wired-in mic

Wire color for color except reverse R&amp;Bk

2302, Pussycat

Code (E)

1-S

2-W

3-R

4-Bk

Alleycat 23

Code (E)

Tur ..... Original Mic  
Color/Part

R ..... violet

Bk ..... R

W ..... Y with Bk cover

S ..... S

Bobcat 23-0

Code (E)

1-Bk

2-W

3-R

4-S

Wildcat II

Code (S)

1-Bu

2-Bk

3-Y

4-S

5-W

6-R

See M+3 Special data sheet or call factory for wiring change inside mic.

Panther, Companion IV

Code (S) Only Mobile, six-wire mics will function with this radio.

Tur ..... Original Mic  
Color/Part

Bu ..... R

R ..... Bk

Bk ..... orange

W ..... W

Y ..... Y

S ..... green

Lion

Code (E)

1-R

2-W

3-S

4-Bk

Puma 23B

Code (E)

1-Bk

2-R

3-S

4-W

Pirate

Code (R)

1-N/C 1-N/C

2-N/C 2-W

3-R&amp;S or 3-N/C

4-W 4-Bk

5-Bk 5-R&amp;S

Tomcat 23B

Code (S)

Tur ..... P/S

Bu ..... R

R ..... Violet

Bk ..... W

W ..... Y

S ..... S

**PIONEER ELECTRONICS CORP.**

GT1100, GT6600

Code (E)

1-W

2-S

3-Bk

4-R

5-

jumper 4 &amp; 5

**POLYCOM**

Senior 23

Code (E)

1-W

2-S

3-Bk

4-R

**PONY**

CB-FBST

Code (R)

1-W

2-S

3-Bk

4-N/C

5-R

CB78

Code (E)

1-W

2-S

3-R

4-Bk

**POWER**

CB2300

Code (R)

1-S

W to B1 or 2-W

Bk to relay 3-R

R&amp;S to Gnd 4-Bk

**PRECOR**

Code (E)

1-W

2-S

3-R

4-Bk

## PRESIDENT

Dwight D., Grant, Honest Abe,  
John Q.,  
Teddy R., Washington, Zachary  
T.

Code (E)

1-S

2-W

3-Bk

4-R

Add 4.7K ohm resistor in series  
with the white lead.

## PROMINENT

MS24

Code (E)

1-W

2-S

3-Bk

4-N/C

5-R

## RANDIX 555

Code (R)

W to R81

R&S to Gnd

Bk to RL1

## RAIDER

4020

Code (E)

1-W

2-S

3-R

4-Bk

## RAY JEFFERSON

CB805

Code (R)

W to B1 or 2-W

S&R to Gnd 3-R

Bk to relay 4-Bk

RL1

CB840

Code (E)

1-W

2-S

3-R

4-Bk

5-N/C

CB711

Code (E)

Tur ..... RJ

R ..... Bk or violet

Bk ..... W or R

W ..... R or Y

S ..... S

CB705

Code (E)

1-W

2-S

3-Bk

4-R

CB905

Code (R)

W-Rg

Bk-Tp

R&S-Sh

## R C A

Mark VIII

Code (E)

Wire color for color

Mark IX (010)

Code (E)

1-R

2-S

3-W

4-Bk

14T100, 14T200, 14T260,

14T270, 14T275, 14T300,

14T301, 14T302, 14T303,

14T304, 14T305, 14T400

Code (E)

1-W

2-S

3-R

4-Bk

Sw.K required

## REALISTIC

Plugs on some Realistic radios  
must be fully assembled to be  
operational.

TRC-8D

Code (E)

1-Bk

2-R

3-W

4-S

TRC-9, TRC-9A, TRC-11

Code (S)

Consult Factory

TRC-47, TRC-48, TRC-49,

TRC-57

Code (R)

1-S&R

2-N/C

3-Bk

4-W

5-N/C

TRC-50/Mini 23, TRC-24A,

TRC-23C, TRC-30, TRC-55,

TRC-24B, TRC-24C, TRC-30A,

TRC-52, TRC-68, TRC-200,

TRC-67, TRC-152, TRC-56,

TRC-452

Code (E)

1-S

2-N/C

3-Bk

4-W

5-R

On some models TRC-24A, pins  
2 and 3 should be reversed. On  
TRC-30A and TRC-30 the  
microphone plug must be as-  
sembled before use.  
Speaker switch must be in  
"both" position for model 56.

TRC-46

Code (R)

1-R&S

3-Bk

4-W

jumper 2 & 5

TRC-28, TRC-44, TRC-66,

TRC-88, TRC-99, TRC-100,

TRC-12, TRC-44B, TRC-14,

The above radios are Walkie

Talkie and we do not recom-  
mend using amplified mics.

TRC-18, TRC-X20, TRC-X23,

TRC-X20A

Code (R)

1-S

2-W

3-Bk

4-R

TRC-24

Code (R)

1-W

2-R&S

3-Bk

Sw.K required

Insert 10K ohm resistor in  
series with the white lead for  
desk mics.

Americana 23+

Code (R)

1-Bk

2-W

Sh-R&S

May require modification of  
mobile mics to short white lead  
during receive. See page 8.

TRC-23B, TRC-40

Code (R)

1-W

2-R&S

3-Bk

4, 5-N/C

Requires 22K ohm resistor in  
series with white lead for desk  
mics.

TRC-29

Code (R)

1-W

2-S&R 1-W

3-Bk or 3-R 2-S

4, 5-N/C 4-N/C

5-Bk 5-Bk

TRC-5

Code (E)

Wire color for color

TRC-50B/Mini 23B

Code (E)

Wired-in microphone. Wire col-  
or for color except reverse R  
and Bk.

TRC-10

Code (S)

1-S&R

2-Y

3-Bu

4-W

5-Bk

## REGENCY

CB501

Code (E)

1-N/C

2-S

3-Bk

4-W

5-R

CR240, CR430, CR485, CR486

Code (E)

1-W

2-S

3-R

4-Bk

Imperial II, Romper, Range Gain,

Range Gain II, Range Gain Dou-

ble Sideband

Code (R)

1-W

2-R

3-Bk

4-S

Ranger CB-270

Code (R)

Tur ..... Original Mic  
Color/Part

W ..... relay contacts

Bk ..... relay coil

R&S ..... line

Caution: Avoid contact between  
any metal mic cases and radio  
chassis.

CB-283, 500

Consult factory for mic  
modification information. After  
modification, connect as  
original mic.

CB-27, CB-27-6/12

Code (R)

Tur ..... Original Mic  
Color/Part

W ..... thru 10K resistor  
to Pin #7 of  
6BE6

R&S ..... chassis Gnd

Bk ..... relay coil

**Formula 23, Sprint 23**

Code (R)

1-W  
2-S  
3-Bk  
4-R

Insert 10K ohm resistor in series with the white lead of desk mics. In some cases 1 &amp; 2 may be reversed.

**GT-523**

Code (E)

Wire color for color except Bk wire and S must be reversed.

**Spring Model 23 II, CR-185, CR-142, CR-230**

Code (E)

1-W  
2-S  
3-Bk  
4-R

Some models must have red and black reversed.

**CR-123B**

Code (R)

1-W 1-Bk  
2-R&S or 2-W  
3-Bk 3-R&S**CR-186, CR-202**

Code (E)

Tur ..... Original Mic  
Color/Part  
W ..... R  
Bk ..... Bk  
R ..... purple  
S ..... S**BTL-301, 304**

Code (R)

1-S&Bk  
2-R  
3-N/C  
4-W**HR-2MS, CR-123**

Code (R)

Tp-W  
Rg-Bk  
Sh-R&S**ROBERTS****RCB10, RCB50**

Code (R)

1-S&R  
2-W  
3-N/C  
4-Bk**RCB70**

Code (E)

1-W  
2-N/C  
3-N/C  
4-R  
5-Bk  
6-S**RCB470A**

Code (S)

1-W  
2-N/C  
3-Bu  
4-S  
5-Bk  
6-R

Y not used

**ROBYN****WV123A**

Code (S)

1-Y  
2-Bu&S  
3-R  
4-W  
5-N/C  
Bk not used**BB123, TR123C, GT7C, TR123B**  
(4 pin)

Code (R)

1-W 1-W  
2-R&S or 2-Bk or 2-Bk  
3-N/C 3-S 3-R  
4-Bk 4-R 4-S

Last two wiring listings are for 123B only.

**TR123B (6-pin), TR123**

Code (R)

1-W  
2-Bk  
5-R&S  
2, 3, 6-N/C  
Sw.K required for TR123B**J123**

Code (R)

Tur ..... Orig. mic col-  
or/part  
R&S ..... Circuit Gnd  
W ..... PA switch &  
volume  
Bk ..... Relay coil**SS747B**

Code (R)

1-W  
2-Bk  
3-N/C  
4-R&S**XL1, XL2, SX101, SX102B, SX102D, GT7, GT7B, K123, T123**

Code (R)

1-W  
2-S  
3-Bk  
4-R**LB23, LB23A, SX007, WV23, WV23A, DG30**

Code (E)

1-W  
2-S  
3-Bk  
4-R

Sw.K required

**T123, Range Gainer**

Code (R)

1-S  
2-W  
3-Bk  
4-R**ROMAR****CB-7000**

Code (E)

1-W  
2-Bk  
3-S  
4-R**ACT-1914**

Code (E)

1-W  
2-S  
3-R  
4-Bk**ROSS****CB-1000**

Code (E)

W-R82 1-W  
R-Speaker or 2-S  
Bk-R76 3-Bk  
S-R79 4-R**ROYAL****M-336**

Code (S)

W to R63 and C54  
R&S to Gnd  
Y to T2  
Bu to D12  
Bk to C12, C19**ROYCE****1-614**

Code (E) Code (R)

1-W 1-Bk  
2-S or 2-N/C  
3-Bk 3-R&S  
4-R 4-N/C  
5-W  
6-N/C

Sw.K required

1-600, 1-600A, 1-600B, 1-620,  
1-621, 1-612, 1-653B, 1-650,  
1-648

Code (E)

1-W  
2-S  
3-Bk  
4-R

1-612 requires Sw.K

1-601, 1-602, 1-602A, 1-603,  
1-605A, 1-606, 1-610, 1-624,  
1-625, 1-632, 1-635, 1-636,1-640, 1-641, 1-655, 1-658,  
1-660, 1-662, 1-675, 1-678,  
1-682, 1-700, some 1-630 and

1-631

Code (R)

1-W  
2-S&R  
3-Bk  
4-N/C  
1-655, 1-658 and 1-675 require  
Sw.K

Insert 4.7K ohm resistor in series with white lead in desk mics.

1-605, some 1-602

Code (R)

1-W  
2-S  
3-Bk  
4-R

1-630

Code (R)

1-W  
2-R&S  
3-N/C  
4-N/C  
5-Bk  
6-N/C

1-631, 1-580

Code (R)

1-W  
2-R&S  
3-Bk  
4-N/C  
5-N/C  
6-N/C

1-590A

Wired-in

Color for color except reverse R and Bk.  
Code (E)

Tur ..... Roy

W ..... W  
S ..... S  
R ..... Bk  
Bk ..... R**RYSTAL****CBRT700, CBR1800**

Code (E)

1-W  
2-S  
3-R  
4-Bk**CBR2100**

Code (E)

1-S  
2-W  
3-Bk  
4-R**SAMN ELECTRONICS CORP.****Orbitsonic 200**

Code (E)

1-S  
2-W  
3-Bk  
4-R

**SANYO**

TA901B

Code (E)

1-S  
2-W  
3-R  
4-Bk  
5-N/C

TA901C, TA1000, TA4000

Code (E)

1-Bk  
2-W  
3-S  
4-R

TA923

Code (E)

1-S  
2-N/C  
3-Bk  
4-W  
5-R**S B E INC.****(Linear Systems)**

SBE49CB (Brute 40)

Code (E)

1-R  
2-S  
3-N/C  
4-W  
5-Bk

SBE34 (Brute)

Code (S)

W to R63 & C54  
R&S to Gnd  
Y-T2  
Bu-D12  
Bk-C12, C19

SBE ICB (Coronado, Wired-in Mic)

Code (R)

W-pin 11 of K1  
Bk-pin 13 of K1  
R&S-Gnd of chassis

SBE6, SBE7 (Sierra), SBE8 (Console), SBE10 (Coronado II), SBE11 (Trinidad), SBE21CB, SBE12 (Side Bander II), SBE14 (Super Console), SBE16 (Console II), SBE18 (Side Bander III), SBE21 (Cortez), SBE26 (Formula D), SBE29 (Catalina III), SBE30 (Trinidad II), SBE45 (Trinidad III), SBE42 (Cortez 40), SBE41 (Aspen), SBE44 (Malibu 40)

Code (R)

1-S  
2-W  
3-Bk  
4-R

SBE22CB (Catalina II)

Code (S)

Tur ..... Original mic col-  
or/partS ..... S  
W ..... W  
Y ..... Bu  
Bk ..... Brown  
R ..... R  
Bu ..... Bk

SBE9 (CB Catalina)

Code (R)

Has wired-in mic. Wire color for color

Capri II (wired in)

Code (S)

W to R61, C45  
S to Gnd  
Y to T8  
R to R37, C46 etc.  
Bk to D8  
Bu to R35, R40 etc.

Tempus 25

Code (E)

1-S  
2-W  
3-Bk  
4-R**SCOUT**

S110

Code (E) or (R)

1-W  
2-Bk  
3-R  
4-S**SEARS**9343670500, 93436740500,  
367105000, 367416000,  
367426000, 367606000,  
367126000, 380607000,  
CM23785A, CM6000LB,  
CM6000LA, CM6100S,  
CM6200S, CM4700S,  
CM6000LC, CM2358S

Code (E)

1-S  
2-N/C  
3-Bk  
4-W  
5-R

93436711600

Code (E)

1-N/C  
2-S  
3-R  
4-W  
5-Bk

2862676, 280626730

Code (R)

1-W  
2-N/C  
3-Bk  
4-N/C  
5-R  
6-S  
7-N/C

93436770500, 36771500,

36772600 (SSB)

Code (R)

1-Bk 1-R&S  
2-N/C 2-N/C  
3-W or 3-Bk  
4-S&R 4-W  
5-N/C 5-N/C**SEIKI**

HA23C

Code (R)

1-W 1-W  
2-S&R 2-S&Bk  
3-N/C or 3-R  
4-N/C 4-N/C  
5-Bk 5-N/C**SHAKESPEARE**

GBS240, 340, 1500, 2000, 2500

Code (E)

1-W  
2-S  
3-R  
4-Bk  
R & Bk may need to be re-versed.**SHARK**

CB55

Code (R)

1-S&R  
2-W  
3-N/C  
4-Bk

C300X, CX300S

Code (E)

1-S  
2-N/C  
3-Bk  
4-W  
5-R**SHARP**

CB500, CB500A, CB500UB

Code (R)

W-Y or brown  
S&R-S&R or Bk  
Bk-purple

CB750, CB750A, CB800,

CB2260, CB2460

Code (E)

1-W  
2-Bk  
3-R  
4-S

CBT55

Code (R)

1-W  
2&3-R&S  
4-Bk

Insert a 4.7K ohm resistor in series with the mic white lead of desk mics.

**SHIGMA**

SR76

Code (E)

1-W  
2-S  
3-R  
4-N/C  
5-Bk**SILTRONIX**

1011B, 1011C, 1011D

Code (E)

Rg-W  
Tp-Bk  
Se-R&S

SSB23, SSB23A, AM1 (Penguin),

AM2 (Condor)

Code (R)

1-W  
2-Bk  
3-N/C  
4-R&S**SKYFON**

OM423

Code (R)

1-W  
2-S&R  
3-Bk  
4-N/C**SOHMERIKAMA**

288A

Code (R)

1-S  
2-Bk  
3-W  
4-R**SOMMERKAMP**

FT277E

Code (R)

1-R&S  
2-W  
3-Bk  
4-N/C**SONAR**

E, G, H, FS23, FS2340, FS3023

Code (R)

Rg-W  
Tp-Bk  
Se-R&S

J23

Code (R)

Tur ..... Orig. mic col-  
or/part  
W ..... W  
Bk ..... R  
R&S ..... Bk&S

J23 (5-pin plug)

Code (E)

1-S  
2-R  
3-Bk  
4-W  
5-N/C

**SONIC**

CT101, 105, 121

Code (E)

Tur ..... Son  
W ..... Y 1-S  
Bk ..... W or 2-Bk  
R ..... Bk 3-R  
S ..... S 4-W

**SONICO**

CT190

Code (E)

Tur ..... Soni  
W ..... Y  
R ..... Y-Green  
S ..... S  
Bk ..... orange

**SONY**

ICB2500

Code (R)

1-S&R  
2-Bk  
3-N/C  
4-W

**SPARKOMATIC**

CB1023

Code (E)

1-W  
2-S  
3-Bk  
4-N/C  
5-R  
Sw.K required

CB1123

Code (E)

1-S  
2-W  
3-Bk  
4-R

CB2023

Code (E)

1-W  
2-S  
3-Bk  
4-R

CB2123

Code (S)

1-W  
2-Bu  
3-Bk  
4-S  
5-R  
Y-not used

**SQUIRE-SANDERS**

23 er

Code (R)  
Tp-Bk  
Rg-W  
Se-R&S

**STANDARD**

**COMMUNICATIONS**

Horizon 29

Code (E)  
1-S  
2-W  
3-Bk  
4-R

Horizon 29A

Code (E)  
1-R  
2-W  
3-Bk  
4-S

**SUPERSCOPE**

Aircommand CB140, CB340,

CB640

Code (E)  
1-N/C  
2-S  
3-Bk  
4-R  
5-W

**SURVEYOR**

2400

Code (E)

Tur ..... Sur.  
R ..... Purple  
Bk ..... R  
W ..... Y  
S ..... S

2300, 2400, 2400A, 2400B

Code (R)

1-Bk  
2-S&R  
3-N/C  
4-W

2400

Code (R) Code (E)  
1-W 1-W  
2-S 2-S  
3-R or 3-Bk  
4-N/C 4-N/C  
5-Bk 5-R

2600

Code (E)  
1-R  
2-Bk  
3-W  
4-S

2610, 2630

Code (E)  
1-S  
2-W  
3-Bk  
4-R

**SWAN**

1210A

Code (R)  
1-W  
2-Bk  
3-R  
4-S

300B

Code (R)  
Rg-W  
Tp-Bk  
Se-R&S

**TAKASAGO  
ELECTRONIC  
INDUSTRIES**

Highway 703CBR

Consult factory

**TEABERRY**

Plugs on some Teaberry radios must be fully assembled to be operational.

5X5, Big T

Code (E)  
1-W  
2-S  
3-R  
4-Bk  
Big T requires Sw.K

5X5 (Silver Face)

Code (R)

1-W  
2-R&S  
3-Bk  
Insert ¼ watt 22K ohm resistor in series with white lead for desk mics.

Big T, Stalker I, Stalker II

Code (R)

1-W  
2-S  
3-R  
4-Bk  
Sw.K required

Insert 4.7K ohm resistor in series with white lead for desk mics.

TB73, Titan T, T Bear, T Charlie,

T Command, T Dispatch

Code (E)

1-W  
2-S  
3-R  
4-Bk

Mighty T

Code (E)  
1-S  
2-N/C  
3-Bk  
4-W  
5-R

Plug must be fully assembled.

Racer T, T-Control, T Hawk

Code (E)

1-R  
2-W  
3-Bk  
4-S

Model T, T123B

Code (R)

1-W  
2-Bk  
3-R  
4-S  
R&S may need to be reversed

Ship's Radio

Code (R)

1-W  
2-Bk  
3-S  
4-R

Tele-T

Code (E)

1-S  
2-N/C  
3-R  
4-W  
5-Bk  
6-N/C

Mini-T

Code (S)

Consult factory

T-Charlie I

Code (E)

1-R 1-Bk  
2-W or 2-W  
3-Bk 3-S  
4-S 4-R

Twin T

Code (R)

Rg-W  
Tp-Bk  
Se-R&S

T-Scout

Code (E)

Tur ..... Tea 1-W  
W ..... Y or 2-S  
Bk ..... R 3-R  
S ..... S 4-Bk  
R ..... Violet

**TELEDYNE**

RA510

Code (R)

1-W  
2-R&S  
3-Bk

**TEMPO**

ONE

Code (R)  
Tp-Bk  
Rg-W  
Se-S&R

**TENKO**

M80  
Code (R)  
Rg-Bk  
Tp-W  
Se-S&R

**TOKAI**

TC5040  
Code (S)  
1-W  
2-Y  
3-Bk  
4-R  
5-Bu  
6-S

**TOKYO-SANSEI**

Grand-Prix, D1325RF, 1125  
Code (E)  
1-W  
2-S  
3-R  
4-Bk

**TOYOTA MOTOR SALES**

00860-00020, 00860-0001  
Code (E)  
1-W  
2-Bk  
3-S&R  
4-N/C  
5-N/C  
R may need to be on pin 5

**TRADESCOPE**

2001  
Code (R)  
1-R  
2-Bk&S  
3-N/C  
4-W  
5-N/C  
6-N/C

**TRAM**

TR27D, TR27E, TR70C, XL100,  
Corsair, 464  
Code (R)  
Tp-Bk  
Rg-W  
Se-R&S  
Titan, Titan II, Titan IIA, Titan III,  
Titan IV, D201  
Code (R)  
1-W  
2-S  
3-R  
4-Bk

Diamond 40, Diamond 60, XL,  
XL5  
Code (R)  
1-S  
2-W  
3-Bk  
4-R

Diamond 60 and Diamond 40  
require 4.7K ohm resistor in  
series with the white lead in  
desk mics.

Newer models XL5 and  
Diamond 40 may be Code (E).

**TRANSPHONIC**

CB418  
Code (E)  
1-S  
2-W  
3-R  
4-Bk  
5-N/C

**TRANSONIC**

MCB22, MCB40, MCB41  
Code (E)  
1-W  
2-S  
3-Bk  
4-R

MCB24  
Code (E)  
1-W  
2-S  
3-R  
4-Bk

**TRUETONE**

MIC4434A67 (with noise blanker)  
Code (E)  
1-W  
2-S  
3-R  
4-Bk  
May require a 33K ohm resistor  
in series with white lead

MIC4434A67 (without noise  
blanker)  
Code (E)  
1-W  
2-S  
3-Bk  
4-R

**MCC4434A57**

Code (E)  
1-W  
2-Bk  
3-R  
4-S

**UNIDEN CORP.**

CBR9300  
Code (R)  
1-N/C  
2-Bk  
3-W  
4-S&R

**UNIMETRICS**

Porpoise I  
Code (E)  
W to C34  
S to Chassis Gnd  
R to Br  
Bk to Bt

Porpoise I, Mako I, Marlin I  
Code (S)  
Tur ..... Uni board No.  
Bu ..... 2  
R ..... 1  
Bk ..... 3  
W ..... 4  
Y ..... N/C  
S ..... Gnd

Stingray I  
Code (R)  
Middle terminal-W  
Bottom terminal-Bk  
Top two-R&S

Stingray II  
Code (R)  
1-W  
2-R  
3-S  
4-N/C  
5-Bk

Sandpiper 25, Sandpiper 25DX  
Code (E)  
1-R  
2-W  
3-S  
4-Bk

Seahorse I  
Code (S)  
Bu-T2  
Bk-R3  
W-M4  
S-G  
R-B1  
Y not used

**UNION**

UTR1000  
Code (E)  
1-W  
2-S  
3-R  
4-Bk

**UNIVERSE**

747  
Code (R) 1-S  
W to B1 or 2-W  
Bk to relay 3-R  
R&S to Gnd 4-Bk

**U S L**

Contact 23  
Code (E)  
1-Bk  
2-W  
3-R  
4-S  
Sw.K required

**UTAC**

TR20  
Code (R)  
Rg-W  
Tp-Bk  
Se-R&S

18M, TRX30  
Code (R)  
1-W  
2-R&S  
3-Bk  
Micro Mini 3, Micro Mini 6,  
Micro Mini 23, Super Tiny 23  
Code (S)  
1-W 1-W  
2-Y 2-Bk  
3-Bk 3-Bu  
4-R or 4-Y  
5-Bu 5-R  
6-S 6-S

Studio 4000  
Code (R)  
1-W  
2-Bk  
3-S&R  
4-N/C  
TRX2000  
Code (R)  
1-Bk  
2-S&R  
3-W  
4-N/C  
5-N/C

**VANCO**

Stallion 1000  
Code (R)  
1-W  
2-Bk&S  
3-R  
4-N/C  
5-N/C

**VECTOR**

III, VI, IX  
Code (R)  
1-W  
2-S&R  
3-N/C  
4-Bk

VII  
Code (E)  
1-W  
2-S  
3-R  
4-Bk

**WELLS INC.**

W605  
Code (R)  
1-W  
2-S&R  
3-Bk  
4-N/C  
5-N/C

W705  
Code (E)  
1-S  
2-W  
3-Bk  
4-R

**WESTERN AUTO**

23-4434-9, CYJ4834A-87,

CYJ4832A-87

Code (E)

1-W

2-S

3-R

4-Bk

CYJ4837A-87

Code (E)

1-W

2-N/C

3-R

4-S

5-N/C

6-Bk

**WESTLAND  
INTERNATIONAL**

Westport 9000

Code (E)

1-W

2-S

3-R

4-Bk

**WILSON**

60

Code (E)

1-W

2-S

3-R

4-Bk

**WINDSOR**

W60, W80, MCB22

Code (E)

1-W

2-S

3-R

4-Bk

1008

Code (R)

1-W

2-S

3-R

4-N/C

5-Bk

3000

Code (E)

1-S

2-W

3-R

4-Bk

5-N/C

**X-TAL**

XCB7

Code (E)

1-W

2-N/C

3-N/C

4-R

5-Bk

6-S

XCB70

Code (S)

1-W

2-N/C

3-S

4-Bu

5-R

6-Bk

XCB71

Code (S)

1-W

2-N/C

3-Bu

4-S

5-Bk

6-R

XCB6, CB3, Granada

Code (E)

1-S

2-W

3-R

4-Bk

CB5, XCB11

Code (R)

1-S&amp;R

2-W

3-N/C

4-Bk

CB7

Code (E)

1-W

2-N/C

3-Bk

4-N/C

5-R

6-S

XSSB10

Code (R)

1-Bk

2-N/C

3-N/C

4-N/C

5-W

6-R&amp;S

**YAESU**

FT101, FT109B, FT401B

Code (R)

Tp-Bk

Rg-W

Se-R&amp;S

FT101, FT101B, FT101EE,

FT101EX

Code (R)

1-R&amp;S

2-W

3-Bk

4-N/C

**ZENIER**

77

Code (E)

1-W

2-S

3-R

4-Bk

**ZODIAC**

M5023

Code (E)

1-S

2-N/C

3-Bk

4-W

5-R

1-W

2-S

or 3-Bk

4-N/C

5-R

M5026

Code (R)

1-W

2-R&amp;S

3-Bk

4-N/C

5-N/C

In parting, we at Telex hope your microphone and radio are working well together and that you are enjoying the benefit of each. It should be pointed out that information in this booklet is as accurate as the information we have received.

We would like to thank all the concerned individuals, agencies and companies who have contributed information to make this booklet possible.

Thank you,  
Customer Relations Department



## RETURNING MICS TO FACTORY FOR REPAIR

Should it become necessary to return your microphone to the factory, please use the following form and return via insured mail or UPS to:

Turner Division of  
Telex Communications, Inc.  
ATTN: CB Customer Service  
1720 E. 14th St.  
Glencoe, MN 55336

Your Name \_\_\_\_\_

Your Address \_\_\_\_\_  
Street

City State Zip

Your Telephone \_\_\_\_\_

Date \_\_\_\_\_

Type of Microphone \_\_\_\_\_

Length of Time Owned \_\_\_\_\_

Radio Mfg. Name \_\_\_\_\_

Model Number \_\_\_\_\_

How used (ie: car, boat, truck, etc.) \_\_\_\_\_  
\_\_\_\_\_

Specific Problem \_\_\_\_\_  
\_\_\_\_\_  
\_\_\_\_\_

On chargeable repair orders, microphones will be returned COD, UPS, unless otherwise specifically requested. Customers requesting shipment by "fastest way" will be charged for that service.

**TELEX** **TURNER**

TELEX COMMUNICATIONS, INC.

PN 02695

# **K4XL's** **BAMA**

This manual is provided **FREE OF CHARGE** from the "BoatAnchor Manual Archive" as a service to the Boatanchor community.

It was uploaded by someone who wanted to help you repair and maintain your equipment.

If you paid anyone other than BAMA for this manual, you paid someone who is making a profit from the free labor of others without asking their permission.

You may pass on copies of this manual to anyone who needs it. But do it without charge.

Thousands of files are available without charge from BAMA. Visit us at <http://bama.sbc.edu>